

HOME & GARDEN

Antiques/G2
Games/G4
Horoscope/G8

Sunday, May 27, 2012

Maine Sunday Telegram

SECTION G



The garden behind the Wadsworth-Longfellow House was dismantled for an expansion project. Now it's back.

Once more, a place of respite for busy city

The Longfellow Garden is getting back into shape. Tucked behind the Wadsworth-Longfellow House at 489 Congress St., the garden was dismantled three years ago as part of the expansion of the Maine Historical Society library. Now that everything has been replanted and had a couple of years to grow, there is again a quiet oasis in downtown Portland.



TOM ATWELL
MAINE GARDENER

When the historical society holds its annual meeting on Saturday, the children's gate is going to be reinstalled at the garden. The gate was designed by Alexander Wadsworth Longfellow Jr., a nephew of Henry Wadsworth Longfellow and a Boston architect.

The Longfellow Garden probably does not have any plants left over from the time that Henry lived in the house, said Imelda Schaefer, a member of the historical society who helped coordinate the restoration of the garden after the library project.

But there is at least one lilac that dates to when Henry's sister, Anne Longfellow Pierce, lived in the home. She bequeathed the home to the Maine Historical Society upon her death in 1901.

"Jeff O'Donal pulled that lilac, took it to his nursery and kept it for us for about four years," Schaefer said.

But while the plants are different, and some of the garden was lost to the expansion of the library, it has the same feel.

"It still has the same long view over the garden from the house," Schaefer said. "And it still has the brick paths in the center and the stone path along the wall."

Schaefer got involved in the garden as a member of the Maine Historical Society board of trustees. And when the library expan-

Please see **ATWELL**, Page G6



Tom Atwell photo

A lilac that dates to when Alice Longfellow Pierce lived in the home is flourishing in the garden today.

OPEN HOUSE



The basketball court, below, is in a barn near the home's attached garage, above.



Photos by Gordon Chibroski/Staff Photographer

Home court advantage

The Simonds home in Falmouth boasts stunning features throughout – not to mention a basketball court.

By **RAY ROUTHIER**
Staff Writer

FALMOUTH — Most people can't walk into Ruby Simonds' house without saying "wow." Right away. Just inside the front door is a massive curved flying staircase like something out of a Colonial mansion or a movie about the Old South.

The staircase, seemingly unsupported, rises from a black-and-white floor to a spacious second-floor landing. The dark woodwork and stainless steel spindles between the steps and railing give it an even more distinctive look.

"Everybody says something about the staircase," said Simonds. "The whole entryway, really, is breathtaking."

Simonds says that while the staircase is a showstopper, when she first saw the house, she saw something she really liked in every room.

Built in 2005, it's a large, rambling two-story with a

ABOUT THIS SERIES

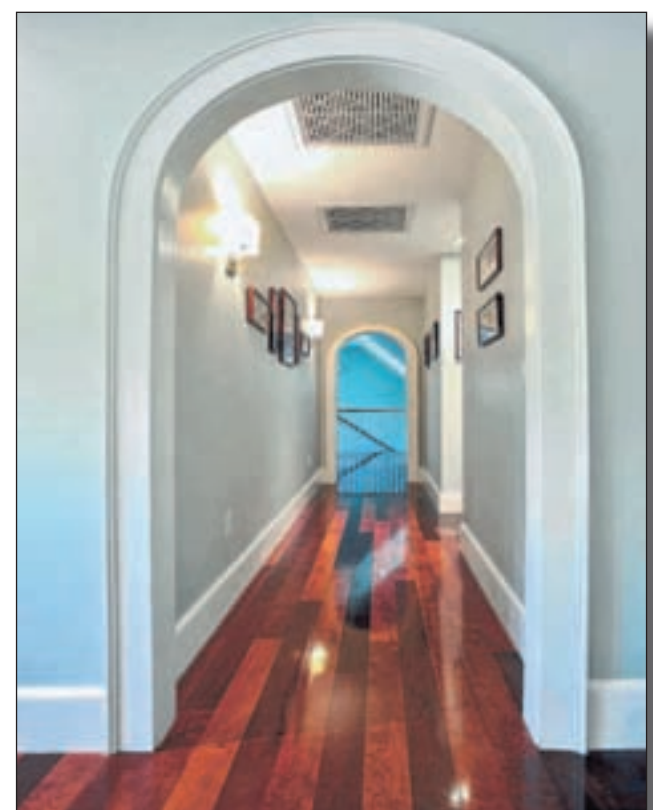
"OPEN HOUSE" is a monthly series in Home & Garden profiling eye-catching, historic or innovative homes around Maine.

TO SUBMIT a home for this series, contact Ray Routhier at routhier@pressherald.com or at 791-6454.

Please see **HOUSE**, Page G3



Clockwise from above: Inside the home, the grand entryway with its gorgeous flying staircase; an upstairs hallway connecting bedrooms on either side of the house; and a dining nook off the main kitchen.



HOUSE

Continued from Page G1

Shingle look on the outside and lots of unique, eye-catching contemporary features inside. Simonds and her husband, Michael, bought it about two years ago.

"We looked at a lot of houses, but this was the only one where every little thing was just right," said Simonds.

Yarmouth architect Kevin Browne designed the home with many of the more prominent features suggested by the home's first owners.

Those features include the flying staircase as well as two arched doorways on either end of a hallway connecting the main upstairs bedroom area with a two-room suite over the garage. The arches give the hallway the appearance of a tunnel, and frame the views of each end of the second-story interior.

Also eye-catching are the dark wood floors, which were treated with a process that makes them look slightly burnt and darker than most. Then there are smaller details that stand out, like a chandelier in a downstairs bathroom. "I'm the only girl in the house, so that's for me," says Simonds.

There's also a butler's pantry with an extra dishwasher.

One of the main things the Simonds were looking for when they found this house was space for a growing family – four sons ages 6 to 15. So they wanted lots of rooms – big rooms, with open spaces.

The house has that, with five bedrooms and six bathrooms. It has a two-story entryway and ceilings about 10 feet high. Doors and windows are extra wide.

The living room and kitchen are both large, and open to each other. The living room has three sets of double glass doors leading to the backyard to make it feel even more open.

The kitchen has an island bigger than most formal dining tables and a large eat-in area with a large dining table. There's also a formal dining room, a downstairs den and an upstairs family room.

Although the house looks formal – especially the entry – Simonds says her sons and their many friends run around in it with ease. And because it's so big with so many rooms, it doesn't easily feel crowded.

"It's a great house for hide and seek," says Simonds, pointing under the flying staircase.

Another definite "wow" factor is a basketball court in a barn building at the end of the driveway. It wasn't part of the original house; it was designed by Browne specifically for the



The living room reflects the contemporary style of the home's interior. French doors lead out to the backyard patio. **Below:** The kitchen boasts a massive island. Gleaming wood floors throughout the home were specially treated, giving them an eye-catching dark hue.



Left: A chandelier brings bling to one of the bathrooms. **Right:** Another lighting choice adds dazzle to the decor of the contemporary-style formal dining room.

Simonds family.

The court gets plenty of use by the family and their friends, especially in the winter and on rainy days.

From the outside, the basketball court's building looks like a barn or carriage house with a style and roof slope that matches the house.

One of the challenges of designing it was making the interior tall enough for looping three-point shots without making the exterior roof higher than the roof of the house, said Browne. So the floor of the gym

was sunk three feet into the ground, keeping the roof a reasonable height while helping to make the place cool in summer.

When you first enter the court building, there's a little elevated viewing area with a bench and a water bubbler.

"We don't ski, so we're here on the weekends, and this place has somebody in it every day," said Simonds.

Staff Writer Ray Routhier can be contacted at 791-6454 or at: rrouthier@pressherald.com Twitter: [RayRouthier](https://twitter.com/RayRouthier)

ANTIQUES

Continued from Page G2

of this print.

A. Paul Jacoulet (1902-1960) was born in France and spent most of his life in Japan. He made Japanese woodblock prints that were issued in series and sold by subscription. Each series had a distinctive seal, such as a sparrow or butterfly. The complete title of your print is "Joaquina et sa mere au Sermon du Pere Pon." That roughly translates to "Joaquina and her mother to the sermon of Father Pon," so perhaps that was why it was given to the Pope. Leslie Hindman Auctioneers in Chicago sold this print for \$620 in 2011.

TIP: Allergic to dust and dust mites? Put old stuffed animals in a sealed plastic bag, then put the bag in your freezer for 24 hours. The temperature will kill dust mites and their eggs.

CURRENT PRICES: These are recorded from antiques shows, flea markets, sales and auctions throughout the United States. Prices vary in different locations because of local economic conditions.

■ Olympic banner, 1984 Summer Olympics, Los Angeles, white, purple "L," pink "A," red "8," turquoise "4," 22 by 48 inches, \$20.

■ Mechanical bank, "Old Time Uncle Sam" plastic, place coin in Uncle Sam's hand, push button, coin drops in bag, copyright J.S.N.Y., Hong Kong, 1974, 8 3/4 by 4 1/4 inches, \$40.

■ Stamp holder, celluloid envelope, ad for Parke's coffee on one side, ad for Gold Camel Tea on other; insert for stamps, Meek Co., Coshocton, Ohio, c. 1910, 2 1/4 x 1 1/4 inches, \$45.

■ Boy Scouts booklet, "The Boy Scout Plan," celluloid cover, image of American flag, c. 1915, 3 1/4 x 2 1/4 inches, four pages, \$60.

■ Prohibition pennant, felt,

"Make Ohio Dry" on one side, "Ohio Is Going Dry" on other, 1915, 17 inches, \$85.

■ American flag, 46 stars, silk, black pole, 1908, custom-made wooden case, 17 by 12 inches, \$125.

■ Red Wing pottery flower frog, seahorse on coral base, glossy ivory glaze, c. 1942, 8 1/2 by 4 1/4 inches, \$150.

■ Man's linen suit, white, mother-of-pearl buttons, cuffed pants with button fly, "Tailored by Goodall" label, 1930s, size 30 pants, \$295.

■ Coca-Cola carton topper, image of Eddie Fisher, die-cut cardboard, "On Radio, KRHD-Radio," 1954, 20 by 12 inches, \$475.

■ Serving table, William IV, carved mahogany, backsplash with scroll terminals, stretcher shelf, turned vase-shape supports, turned feet, c. 1840, 36 1/2 by 53 inches, \$1,075.

For more information about antiques and collectibles, and free price information, go to: www.kovels.com

LAWN CARE

- Weeds
- Carpenter Ants
- Fertilizing
- Mosquitos
- Insects

Maine owned and operated since 1954

COLLINS

Insect & Lawn Control

326 Presumpscot St.
Portland, ME 04103
772-9842

HUGE SALE

THIS 10'x12' T1-11 SHED BUILT ON YOUR PROPERTY FOR \$2299

\$200 off
Early Bird Sale
All Shed Sizes

**NO DOWN PAYMENT
NO DELIVERY CHARGE**

INCLUDES:

- 50" Double Door • 1 Window with Shutters •
- 1 Loft for Extra Storage • 1 Vent •
- Choice of 25 yr. Shingles in Gray, Brown or Black •
- Built on Your Property •

SALE THROUGH MAY 31ST

CALL Northeast Shed NOW!
207-751-5608
www.northeastshed.com

Celebrity Crossword



ACROSS

1. "Last ___ Standing"
4. "Father Knows ___"
8. "___ This Morning"
11. "Men of a Certain ___" (2009-11)
12. Canal of song
13. "Hollywood Squares" win
14. "Wipeout" host (2)
17. Suffix for boss or class
18. "The TV ___"; 2006 Sigourney Weaver film
19. Lucie's brother
21. Johnson and Cliburn
24. "The Wizard of Oz" role
25. Actress Sandra
26. "I ___ Number Four"; 2011 movie
27. Toodle-___; casual adieu
28. Role on "JAG"
30. Not bananas

32. Actor Estes
34. "Peter ___"
35. "Are You ___?"
41. "___ Hot American Summer"; 2001 David Hyde Pierce movie
42. Julia, for one
43. Bobby the Bruin
44. Prov. in which Alex Trebek was born
45. "One ___ Hill"
46. ___ King Cole

DOWN

1. Frank Burns' rank on "M*A*S*H": abbr.
2. In the past
3. Flavored soft drinks
4. "Brother ___"; 2003 Joaquin Phoenix movie
5. White-tailed eagle
6. Caesar, for one
7. Pegs for EIs
8. ___ Rica
9. Yogi's buddy, for short
10. Steve, to Stan Smith
15. Ed, to Ralph Kramden
16. "___ of Fortune"; 1990 Jeremy Irons movie
19. "Yes, ___"
20. Actress Thompson
22. "High ___"; Gary Cooper classic
23. "The Man With One Red ___"; 1985 Tom Hanks film
29. Butler or Somers
31. Actor ___ Williams
33. "Sesame Street" fellow
34. Soccer great
35. Word in the title of Ashton Kutcher's series
36. Egg layer
37. Aries or Taurus
38. Color
39. Historical period
40. "House Party" host

LAST WEEK'S ANSWER

APPRENTICE
CSI IDLE OSU
OUT OF RAVEN
U THE VOICE D
GO S T HE
APT FOR
RIO ABC
TE C S O
O PARKS AND V
WHERE FLAME
NAR NONO TAR
MIKE BAXTER

Solution
Paget Brewster

the Curtainshop

A Maine Owned Company

Spring Savings

GENEVA PLEATED GROMMET TOP PANELS
Lengths: 63, 72 & 84" - 3 Colors
Regular \$27.99 to 29.99
NOW \$24.88 to 26.88

20% OFF
SELECTED IN STOCK
SHOWER CURTAINS
& BATH ENSEMBLES

WINDOW SHADES
Cut to size while you wait
Up to 40% OFF
Manufacturer's List Price

20% OFF
SELECTED IN STOCK
SHEETS, MATTRESS PADS
& BED PILLOWS

RHAPSODY SHEER LINED GROMMET TOP PANELS
6 Sizes - Double Widths Available
Regular \$17.99 to 39.99
NOW \$14.88 to 34.88

20% OFF
ALL IN STOCK
BATH & AREA RUGS

In Our Custom Gallery

ALL WEATHER WICKER FURNITURE
Chairs, Rockers, Settees & Tables ~ 4 Colors
Regular \$119.88 to 348.88
NOW \$95.00 to 279.00

25% OFF Each
Country Woods Wood Blind
by Hunter Douglas
(Includes motorized)

We specialize in design consultations at your home or in-store.

*We Honor Competitors' Coupons
*Some restrictions apply

SO. PORTLAND • 773-9635
175 Western Avenue
Mon-Sat 9:30am-8pm • Sun 11am-5pm

BANGOR • 947-8100
102 Haskell Road
Mon-Sat 9:30am-8pm • Sun 11am-5pm

WATERVILLE • 872-5634
Shaw's Plaza, Kennedy Memorial Dr.
Mon-Sat 9:30am-6pm • Sun 11am-5pm

www.curtainshopofmaine.com

Sale prices good May 27-June 2, 2012